

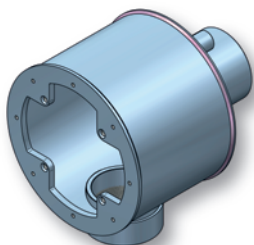
Protiproudý nerez Hugo Lahme Counterflow stainless steel Hugo Lahme

● Protiproudá zařízení Taifun

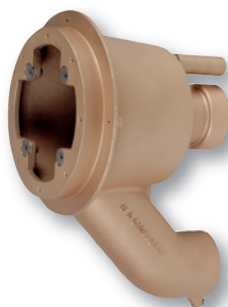
jsou vyrobená z bronzového průchodu a nerezového (AISI 316) čela.

● Counterflow systems Taifun

are made of bronze housing and (AISI 316) stainless steel face.



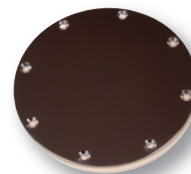
HL7610020



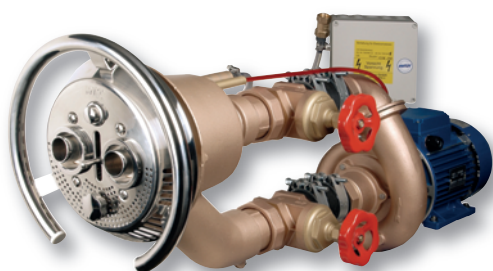
HL7613050



HL7980050



HL7950000

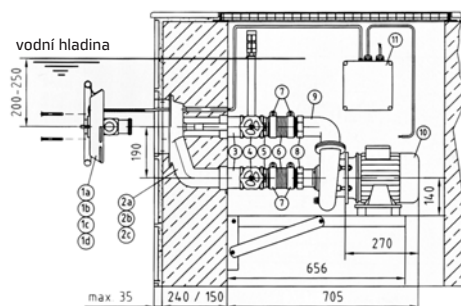


HL7640020

FitStar
a brand of Hugo Lahme GmbH
HUGO LAHME
GmbH



HL7991020



| Protiproud Taifun Counterflow Taifun | | KG | cena Kč | € |
|--|---|----|----------|---|
| HL7610020 | A Předmontovaná sestava NEREZ – Taifun Duo Preassembled set STAINLESS STEEL – Taifun Duo | | 17 509,- | |
| HL7613050 | A Předmontovaná sestava bronz – Taifun Duo Preassembled set bronze – Taifun Duo | | 17 570,- | |
| HL7640020 | A Druhá část Taifun Duo 63 m ³ /h, bronz. čerpadlo 2,6 kW, ovládání, propoj. armatury, čelo V4A Assembly part Taifun Duo 63 m ³ /h, bronze pump 2,6 kW, control box, interconnect. piping, front panel V4A | | 86 214,- | |
| HL7980050 | A Přírubová sada Taifun Flange set Taifun | | 1 686,- | |
| HL7991020 | A Madlo Taifun – kulaté Grab rail Taifun – spherical | | 6 230,- | |
| HL7950000 | A Kulatá zátka NiSn pro fóliové a keramické bazény Spherical cap NiSn for liner and ceramic pools | | 2 798,- | |