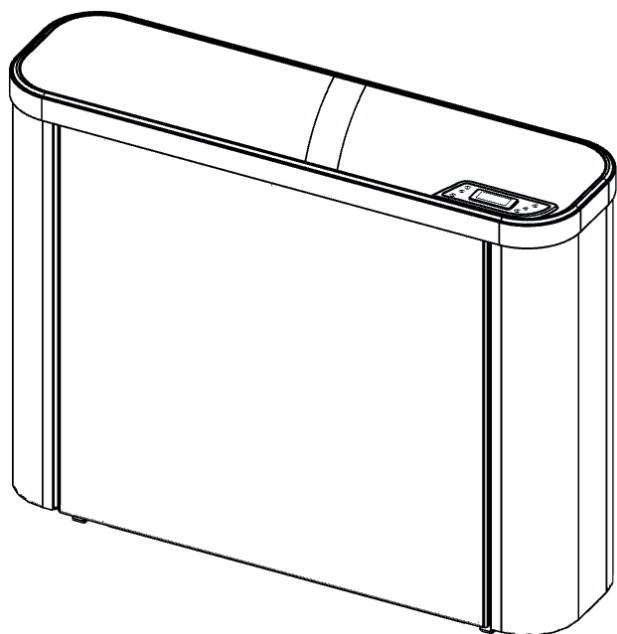


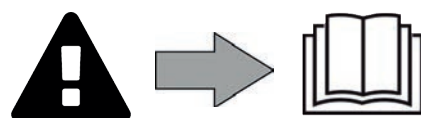
# SIROCCO<sup>2</sup>

**Instructions for installation and use** - English  
Dehumidifier  
Translation of the original instructions in French

EN



More documents on:  
[www.zodiac.com](http://www.zodiac.com)





## WARNINGS



Carefully read the instructions in this manual before using the unit.

### GENERAL WARNINGS

- Failure to respect the warnings may cause serious damage to the pool equipment or cause serious injury, even death.
- Only a person qualified in the technical fields concerned (electricity, hydraulics or refrigeration) is authorised to carry out maintenance or repair work on the appliance. The qualified technician working on the appliance must use/wear personal protective equipment (such as safety goggles and protective gloves, etc.) in order to reduce the risk of injury occurring when working on the appliance.  
- Before handling the appliance, check that it is switched off and isolated.
- The appliance is intended to be used for pools and spas for a specific purpose; it must not be used for any purpose other than that for which it was designed.
- This appliance is not intended for use by individuals (including children) with impaired physical, sensorial or mental abilities, or persons lacking in knowledge and experience, unless they receive supervision or prior instructions on using the appliance from a person responsible for their safety. Children must be supervised to ensure that they do not play with the appliance.
- This appliance can be used by children under 8 and adults with impaired physical, sensory or mental capabilities, or who lack experience and knowledge, if they are correctly supervised or have been instructed in how to use the appliance safely and understand the hazards involved. User cleaning and maintenance operations must not be carried out by children without supervision.
- The appliance must be installed according to the manufacturer's instructions and in compliance with local and national standards. The installer is responsible for installing the appliance and for compliance with national installation regulations. Under no circumstances may the manufacturer be held liable in the event of failure to comply with applicable local installation standards.
- For any work other than the simple user maintenance described in this manual, the product should be referred to a qualified professional.
- If the appliance suffers a malfunction, do not try to repair it yourself; instead contact a qualified technician.
- Deactivating, eliminating or by-passing any of the safety mechanisms integrated into the appliance shall automatically void the warranty, in addition to the use of spare parts manufactured by unauthorised third-party manufacturers.
- Do not spray insecticide or any other chemical (inflammable or non-inflammable) in the direction of the appliance, as this may damage the body and cause a fire.
- Do not touch the fan or moving parts and do not place objects or your fingers in the vicinity of the moving parts when the appliance is in operation. Moving parts can cause serious injury or even death.

### WARNINGS ASSOCIATED WITH ELECTRICAL APPLIANCES

- The power supply to the appliance must be protected by a dedicated 30 mA Residual Current Device (RCD), complying with the standards and regulations in force in the country in which it is installed.
- Do not use any extension lead when connecting the appliance; connect the appliance directly to a suitable power supply.
- A suitable disconnection method, compliant with all local and national regulations on category III overvoltage, and which disconnects all poles of the power supply circuit, must be installed on the power supply circuit to the appliance. This disconnection method is not provided with the appliance and must be supplied by the professional fitter.
- Before carrying out any operations, check that:
  - The required input voltage indicated on the appliance information plate

corresponds to the mains voltage;

- The mains supply is compatible with the appliance's electricity needs and is correctly grounded.

- In the event of abnormal operation or the release of odours from the appliance, turn it off immediately, unplug it from its power supply and contact a professional.
- Before servicing or performing maintenance on the appliance, check that it is powered off and completely disconnected from the power supply. Moreover, check that the heating priority (where applicable) is deactivated and that any other device or accessory connected to the appliance is also disconnected from the power supply.
- Do not disconnect and reconnect the appliance to the power supply when in operation.
- Do not pull on the power cord to disconnect it from the power supply.
- If the power cord is damaged, it must be replaced by the manufacturer, an authorised representative or a repair facility only.
- Do not perform maintenance or servicing operations on the appliance with wet hands or if the appliance is wet.
- Before connecting the appliance to the power supply, check that the connection unit or socket to which the appliance will be connected is in good condition and shows no signs of damage or rust.
- For any component or sub-assembly containing a battery: do not recharge or dismantle the battery, or throw it into a fire. Do not expose it to high temperatures or direct sunlight.
- In stormy weather, disconnect the appliance from the power supply to prevent it from suffering lightning damage.
- Do not immerse the appliance in water (with the exception of cleaners) or mud.

#### **WARNINGS CONCERNING APPLIANCES CONTAINING R410A REFRIGERANT**

- Do not discharge R410A fluid into the atmosphere. This is a fluorinated greenhouse gas, covered by the Kyoto Protocol, with a Global Warming Potential (GWP) = 2088 (European regulation EU 517/2014).
- In order to comply with the applicable standards and regulations in terms of the environment and installation, in particular Decree No. 2015-1790 and/or European regulation EU 517/2014, a leak test must be performed on the cooling circuit when the appliance is first started and at least once a year. This operation must be carried out by a specialist certified to test cooling appliances.

#### **INSTALLATION AND MAINTENANCE**

- The appliance may not be installed close to combustible materials, or the air duct inlet of an adjacent building.
- With some appliances, it is essential to fit a "protection grid"-type accessory if the unit is installed in an area with uncontrolled access.
- During installation, troubleshooting and maintenance, pipes may not be used as steps: the pipe could break under the weight, spilling coolant and possibly causing serious burns.
- When servicing the appliance, the composition and state of the heat transfer fluid must be checked, as well as the absence of any traces of coolant.
- During the appliance's annual sealing test in accordance with applicable legislation, the high and low pressure switches must be checked to ensure that they are securely fastened to the cooling circuit and that they cut off the electrical circuit when tripped.
- During maintenance work, ensure there are no traces of corrosion or oil around the cooling components.
- Before beginning work on the cooling circuit, stop the appliance and wait for a few minutes before fitting the temperature and pressure sensors. Some elements such as the compressor and piping may reach temperatures in excess of 100°C and high pressures with the consequent risk of severe burns.

#### **TROUBLESHOOTING**

- All brazing must be carried out by qualified brazers.
- Replacement pipes must always be made of copper in compliance with standard NF EN 12735-1.

- Leak detection; pressure test:
  - never use oxygen or dry air (risk of fire or explosion)
  - use dry nitrogen or the mixture of nitrogen and refrigerant indicated on the information plate,
  - the test pressure for both the high and low pressure circuits must not exceed 42 bar (for R410A) in cases where the appliance is equipped with the optional pressure gauge.
- The high pressure circuit pipes are made of copper and have a diameter equal to or greater than 1"5/8. A certificate as indicated in §2.1 in compliance with standard NF EN 10204 must be requested from the supplier and filed in the installation's technical file.
- Technical data relative to the safety requirements of the various applicable directives are indicated on the information plate. All this information must be recorded in the appliance's installation manual, which must be kept in its technical file: model, code, serial number, maximum and minimum OT, OP, year of manufacture, CE marking, manufacturer's address, coolant and weight, electrical parameters, thermo-dynamic and acoustic performance.



#### **Recycling**

This symbol is required by the European directive DEEE 2012/19/EU (directive on waste electrical and electronic equipment) and means that your appliance must not be thrown into a normal bin. It will be selectively collected for the purpose of reuse, recycling or creating value. If it contains any substances that may be harmful to the environment, these will be eliminated or neutralised. Contact your retailer for recycling information.



- Before handling the appliance, it is vital that you read this installation and user manual, as well as the "Warranties" booklet delivered with the appliance. Failure to do so may result in material damage or serious or fatal injury and will void the warranty.
- Keep and pass on these documents for later viewing throughout the appliance's service life.
- The distribution or modification of this document in any way is prohibited, without prior authorisation from Zodiac®.
- Zodiac® is constantly developing its products to improve their quality. The information contained herein may therefore be modified without notice.

## CONTENTS



### 1 Specifications

5

1.1 | Description

5

1.2 | Technical specifications

6

1.3 | Dimensions and marking

7

1.4 | Operating conditions

7



### 2 Installation

8

2.1 | Installation requirements

8

2.2 | Installation close to the pool (wall-mounted appliance)

9

2.3 | Connection of the condensate drainage line

10

2.4 | Access to the electrical connection terminal boards

11

2.5 | Electricity supply connections

12

2.6 | Option connections

13



### 3 Use

14

3.1 | User interface presentation

14

3.2 | Operation

15

3.3 | Appliance configuration

16

3.4 | User functions

20



### 4 Maintenance

23

4.1 | Servicing

23



### 5 Troubleshooting

25

5.1 | Appliance behaviour

25

5.2 | Lighting of LEDs on the printed circuit board

25

5.3 | Settings

26

5.4 | Wiring diagrams

27



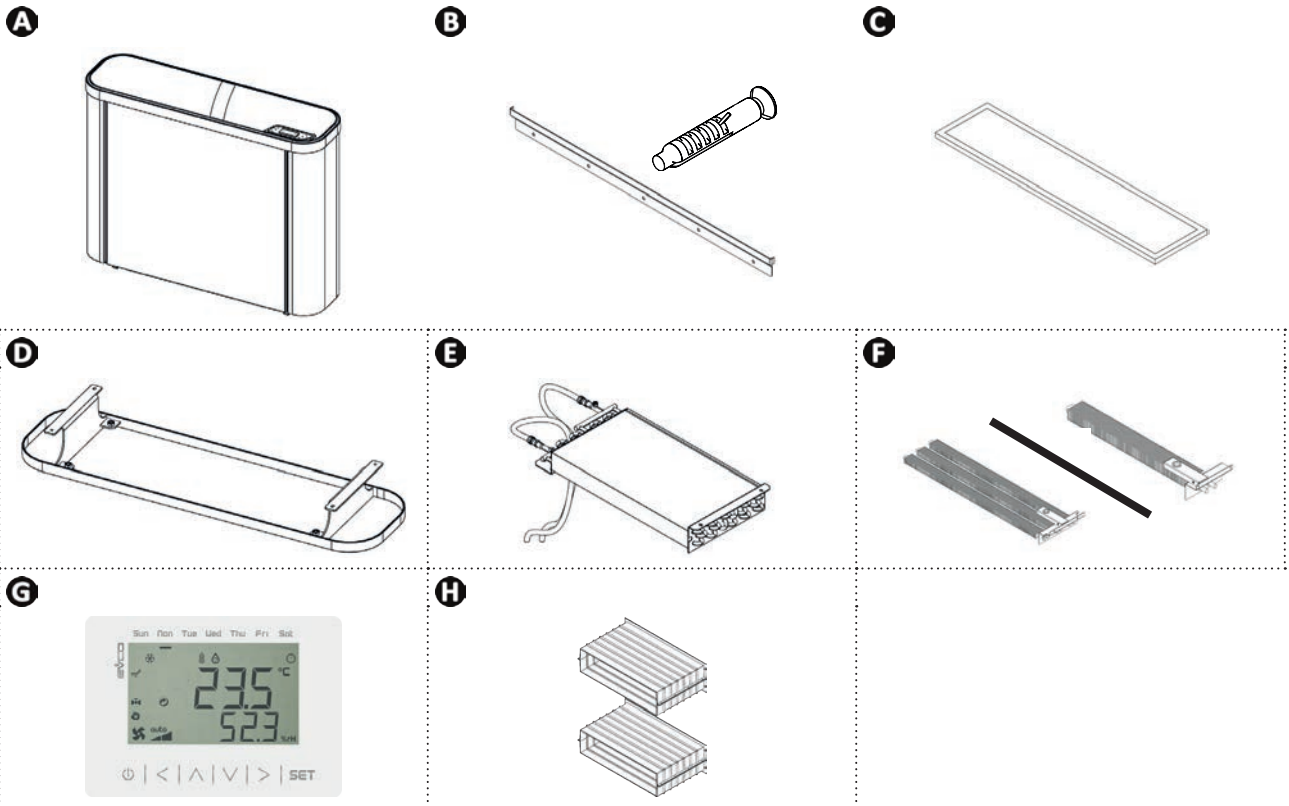
#### **Tip: to make it easier to contact your retailer**

- Write down your retailer's contact details to help you find them more easily and fill in the "product" information on the back of the manual; your retailer will ask you for this information.



# 1 Specifications

## 1.1 | Description



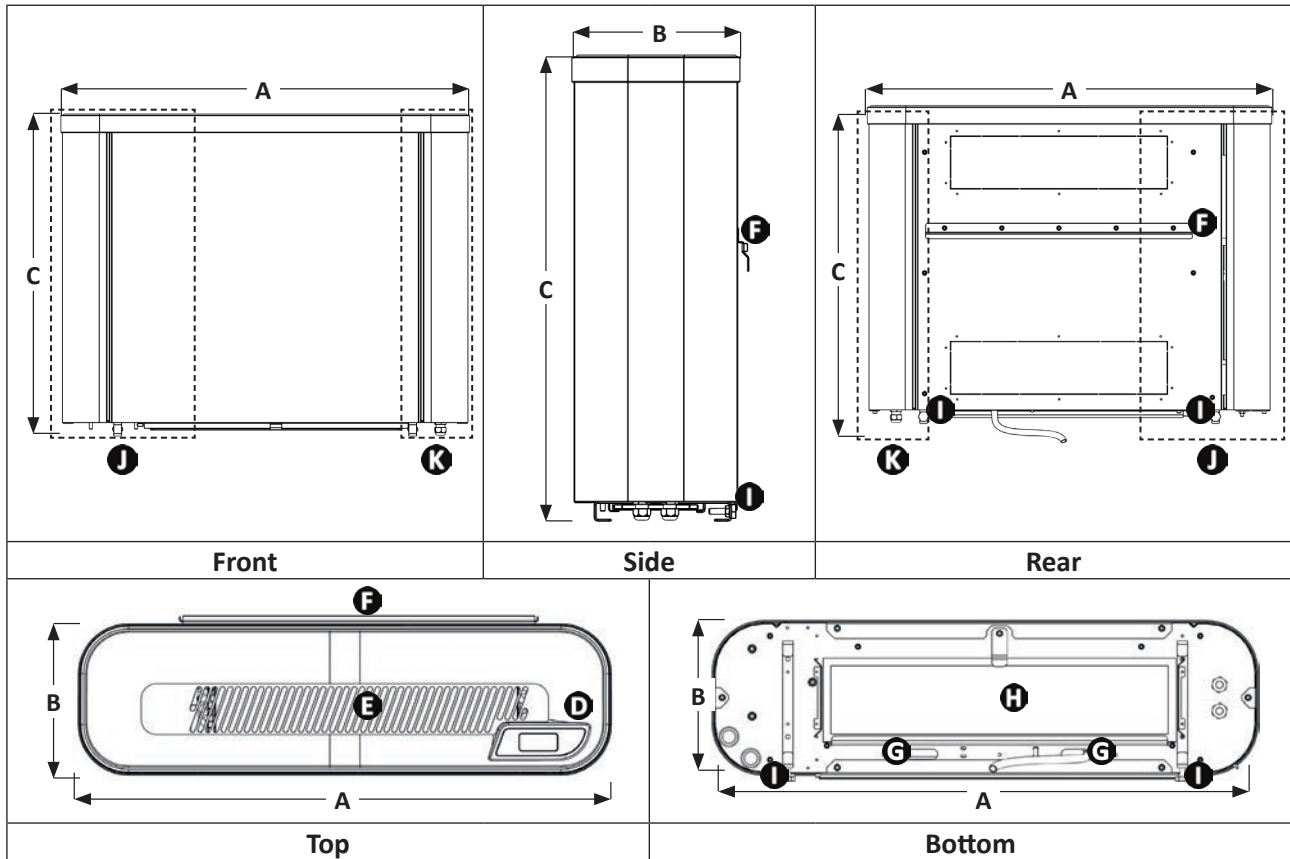
| A |  | SIROCCO <sup>2</sup> |
|---|--|----------------------|
| B | Wall mounting rail + screws (x5 Ø6 mm) | ✓                    |
| C | Filter                                 | ✓                    |
| D | Base                                   | +                    |
| E | "Hot water coil" kit                   | +                    |
| F | "Electric heater" kit                  | +                    |
| G | "Remote control" kit                   | +                    |
| H | "Built in" kit                         | +                    |

✓: Included

+: Available as an accessory

## 1.2 | Dimensions and marking

| SIROCCO <sup>2</sup> | 2M       | 3M | 5M       | 5T |
|----------------------|----------|----|----------|----|
| A                    | 1,060 mm |    | 1,410 mm |    |
| B                    | 300 mm   |    |          |    |
| C                    | 800 mm   |    |          |    |



|          |                               |
|----------|-------------------------------|
| <b>D</b> | User interface                |
| <b>E</b> | Blower grid                   |
| <b>F</b> | Integrated wall mounting rail |
| <b>G</b> | Condensate drainage outlets   |
| <b>H</b> | Filter + extraction grid      |
| <b>I</b> | Levelling screw               |
| <b>J</b> | Cooling section               |
| <b>K</b> | Electrical section            |

EN

### ➤ 1.3 | Technical specifications

| SIROCCO <sup>2</sup> (without options) |                    | 2M                     | 3M    | 5M    | 5T                     |
|--|--------------------|------------------------|-------|-------|------------------------|
| Voltage                                |                    | 220 - 240V / 1 / 50 Hz |       |       | 380 - 400V / 3 / 50 Hz |
| Pollution class                        |                    | I                      |       |       |                        |
| Pollution degree                       |                    | 2                      |       |       |                        |
| Overvoltage category                   |                    | II                     |       |       |                        |
| Nominal electric current requirement   | A                  | 5.5                    | 9.8   | 12.1  | 4.7                    |
| Maximum electric current requirement   | A                  | 8.7                    | 14.3  | 18.5  | 7.3                    |
| Minimum cable section <sup>1</sup>     | mm <sup>2</sup>    | 3 x 2.5                |       |       | 5 x 2.5                |
|  |                    | 3G2.5                  |       |       | 5G2.5                  |
| Dehumidifying capacity <sup>2</sup>    | L/h                | 2.5                    | 3.5   | 5.5   | 5.5                    |
| Power input <sup>2</sup>               | W                  | 1,210                  | 2,150 | 2,660 | 2,720                  |
| Air flow ("Standard" mode)             | m <sup>3</sup> /h  | 600                    | 800   | 1,000 |                        |
| Acoustic power: "Standard" mode        | db(A)              | 61.5                   | 65    | 63.5  | 64.5                   |
| Acoustic power: "Silence" mode         | db(A)              | 58.5                   | 62    | 60    | 61                     |
| Approximate weight                     | kg                 | 72                     | 83    | 103   |                        |
| Refrigerant gas                        |                    | R410A                  |       |       |                        |
| Refrigerant gas load                   | kg                 | 0.88                   | 1.15  | 1.65  | 1.65                   |
|  | TeqCO <sup>2</sup> | 1.84                   | 2.40  | 3.44  | 3.44                   |
| Service pressure (max / min)           | bar                | 42 / 12                |       |       |                        |
|  | MPa                | 4.2 / 1.2              |       |       |                        |
| Service temperature (max / min)        | °C                 | 65 / -16               |       |       |                        |
| Protecting rating                      |                    | IPX4                   |       |       |                        |

#### Option "back up heating"

|                                      |   |       |       |       |       |
|--------------------------------------|---|-------|-------|-------|-------|
| Power                                | W | 2,000 | 3,000 | 4,500 | 4,500 |
| Nominal electric current requirement | A | 9.1   | 13.7  | 20.5  | 6.8   |

#### Option "hot water battery": inlet water temperature at 70 °C minimum / 90 °C maximum

|            |                   |       |       |        |        |
|------------|-------------------|-------|-------|--------|--------|
| Power      | W                 | 7,070 | 8,110 | 11,090 | 11,090 |
| Water flow | m <sup>3</sup> /h | 0.3   | 0.35  | 0.47   | 0.47   |
| Head loss  | kPa               | 27.85 | 38.85 | 34.51  | 34.51  |

#### Option "hot water battery": inlet water temperature at 40 °C minimum / 50 °C maximum

|            |                   |       |       |       |       |
|------------|-------------------|-------|-------|-------|-------|
| Power      | W                 | 2,150 | 3,160 | 3,710 | 3,710 |
| Water flow | m <sup>3</sup> /h | 0.18  | 0.27  | 0.31  | 0.31  |
| Head loss  | kPa               | 15.77 | 22.87 | 17.31 | 17.31 |

<sup>1</sup> Values provided as a guide only for a maximum length of 20 metres, these must be verified and adjusted to suit the installation requirements and the installation standards of the country.

<sup>2</sup> Model without options, under the following nominal conditions: air 30°C, humidity 70%.

### ➤ 1.4 | Operating conditions

#### Operating range<sup>1</sup>:

- Dehumidification function: between 10°C and 40°C.
- Heating function: between 5°C and 40°C.

#### Optimal bathing conditions:

- 26°C ≤ Ambient temperature in the pool room ≤ 28°C.
- 60% ≤ Ambient relative humidity ≤ 70%.

<sup>1</sup> Ambient temperature in the pool room.



- The air temperature setpoint can be adjusted to the same level as that of the water to obtain the best bathing conditions.





## 2 Installation

### 2.1 I Installation requirements

- When the appliance is installed and protected by a residual current device (RCD) with a maximum amperage of 30 mA, it should be installed at a distance of at least 2 metres from the edge of the pool.
- If no RCD is installed with the appliance, it should be installed at a distance of at least 3.5 metres from the edge of the pool.
- Do not lift the appliance by handling the body: use straps (not supplied, see § "1.1.1 I Positioning the appliance").
- Make sure the appliance is level, to avoid any overflow from the condensate drip tray (adjust using the two hexagon screws, see § "2.2 I Installation close to the pool (wall-mounted appliance)").
- Only indoor installation is possible: ensure there is easy access to the appliance for maintenance and connections.
- Allow at least 10 centimetres above it for the filter. If this is not the case, the cost of handling the appliance will not be covered.
- Do not put anything in front of or on top of the blower and extraction grids.
- It is mandatory to install anti-vibration studs (supplied) between the appliance and wall it is mounted on.
- The wall should support the weight (see § "1.2 I Technical specifications") of the appliance.
- For a pool room with a high ceiling or visible roof frame: destratification of the upper layers of the room = one or several fans with PVC blades or an air extractor with fresh air intake. Caution! 230 V AC appliances = must be outside volume 1 (see below),
- **Risk of stratification:**
  - height of the room < 4 to 5 metres: mechanical ventilator unit or extractor,
  - height of the room > 5 to 8 metres: ceiling fans with large blades.
- **Building requirement:** pool room = high relative humidity. Check during construction that:
  - the materials used are compatible with a swimming pool environment,
  - the walls are sufficiently waterproofed and insulated to prevent condensation from forming in the room when relative humidity reaches 60 to 70%,Buildings with lightweight structures (verandas, shelters, etc.): there is no risk of deterioration of the structure, even in case of dew as they are designed to support this (even with a relative humidity of 70%),
- **Ventilation, renewal of air:**
  - private pools: highly recommended,
  - public pools: compulsory.The air can be renewed by:
  - a simple mechanical ventilation unit,
  - a wall or roof extractor with fresh air intake grids.This ventilation ensures the hygienic renewal of air, the removal of any chloramines present in the air, and the elimination of excessively hot air, whilst contributing to the dehumidification of the room.
- The appliance must be installed in accordance with the IEC/HD 60364-7-702 standard and the national regulations in force for swimming pools.



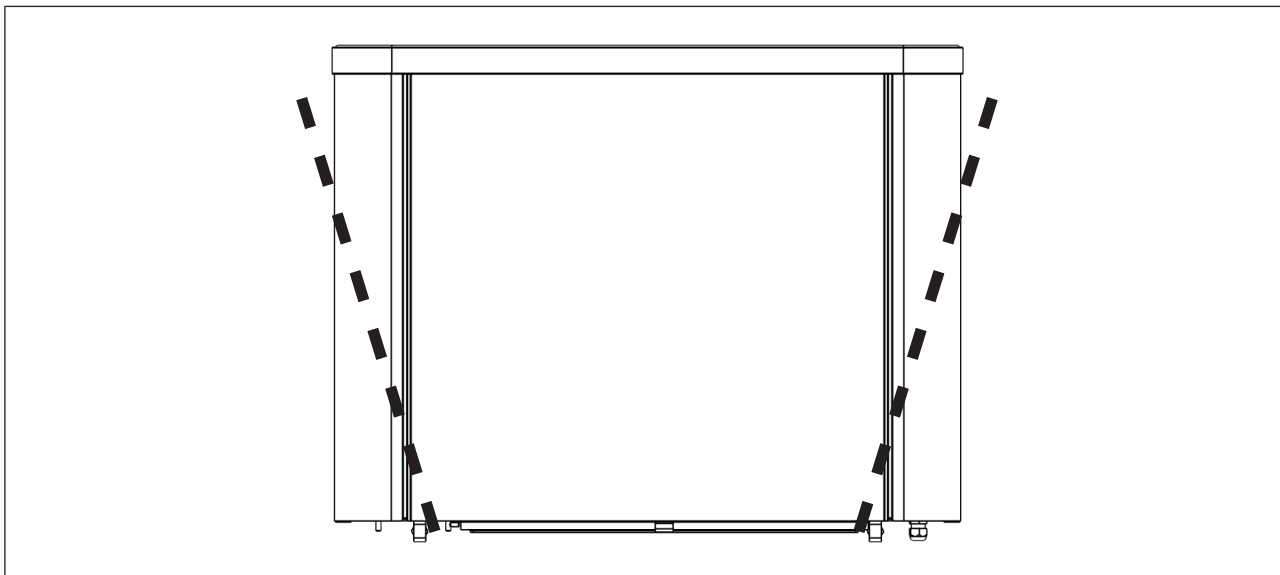
#### **Tips to reduce noise pollution emitted by your dehumidifier**

- Install it in an open space (sound waves are reflected on surfaces).
- Activate the "Silence" mode (see § "3.3.4 Activating/deactivating "Silence" mode"), the dehumidifier will operate at a lower noise level with a slightly lower dehumidifying capacity.

## ➤ 2.2 I Installation close to the pool (wall-mounted appliance)

### 2.2.1 Positioning the appliance

- At least two people are required for moving the appliance.
- Use straps (not supplied) when lifting the appliance so as not to damage it when positioning it.
- Place the straps in the positions shown by the dotted lines in the following diagram:



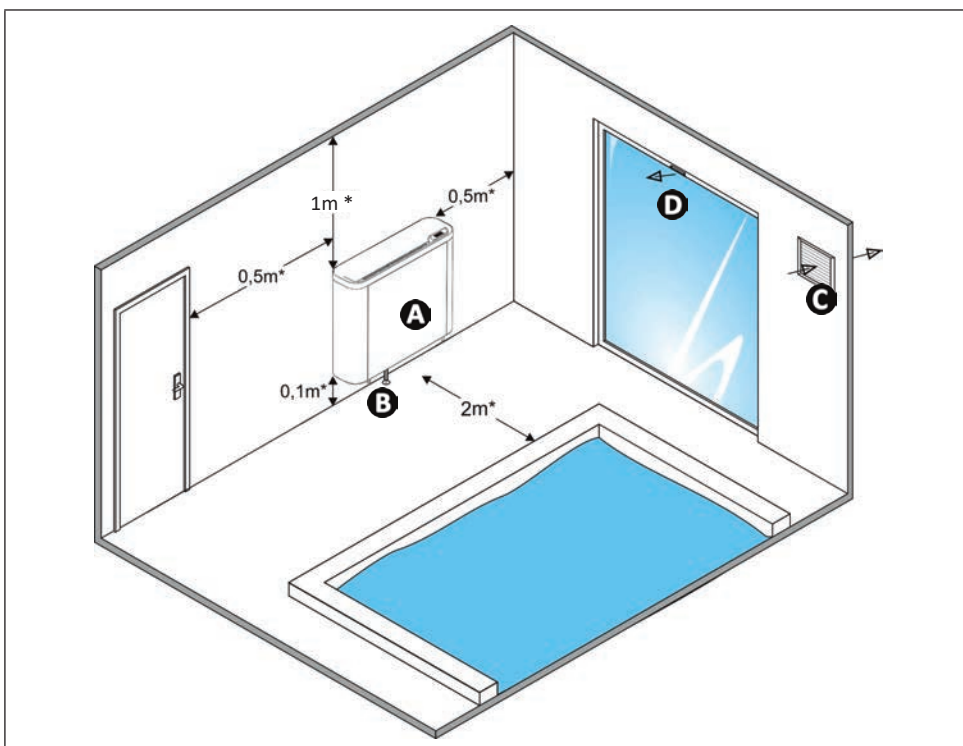
#### **Information: weight of appliance**

- The left side of the appliance (as seen from the front) is heavier than the right side.

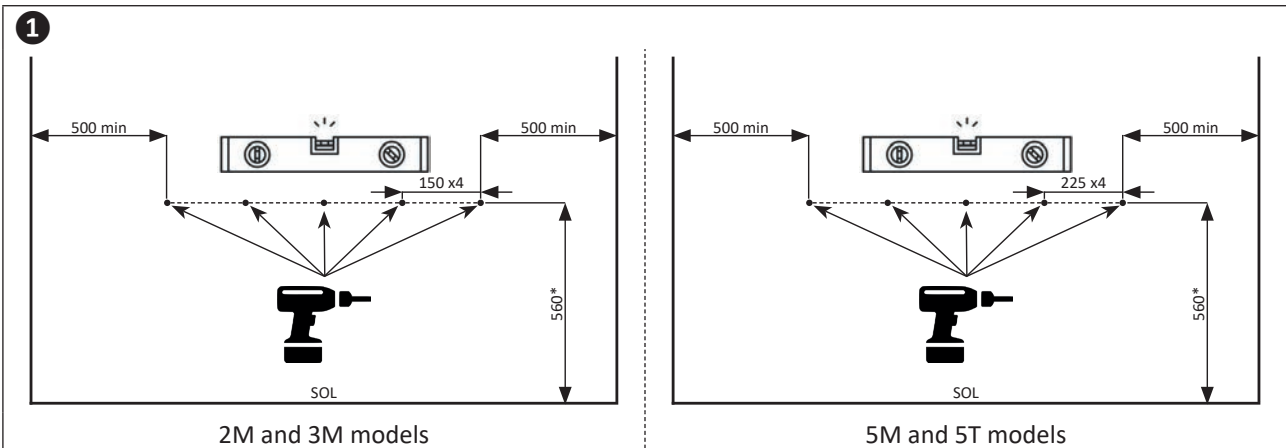
### 2.2.2 Selecting the location



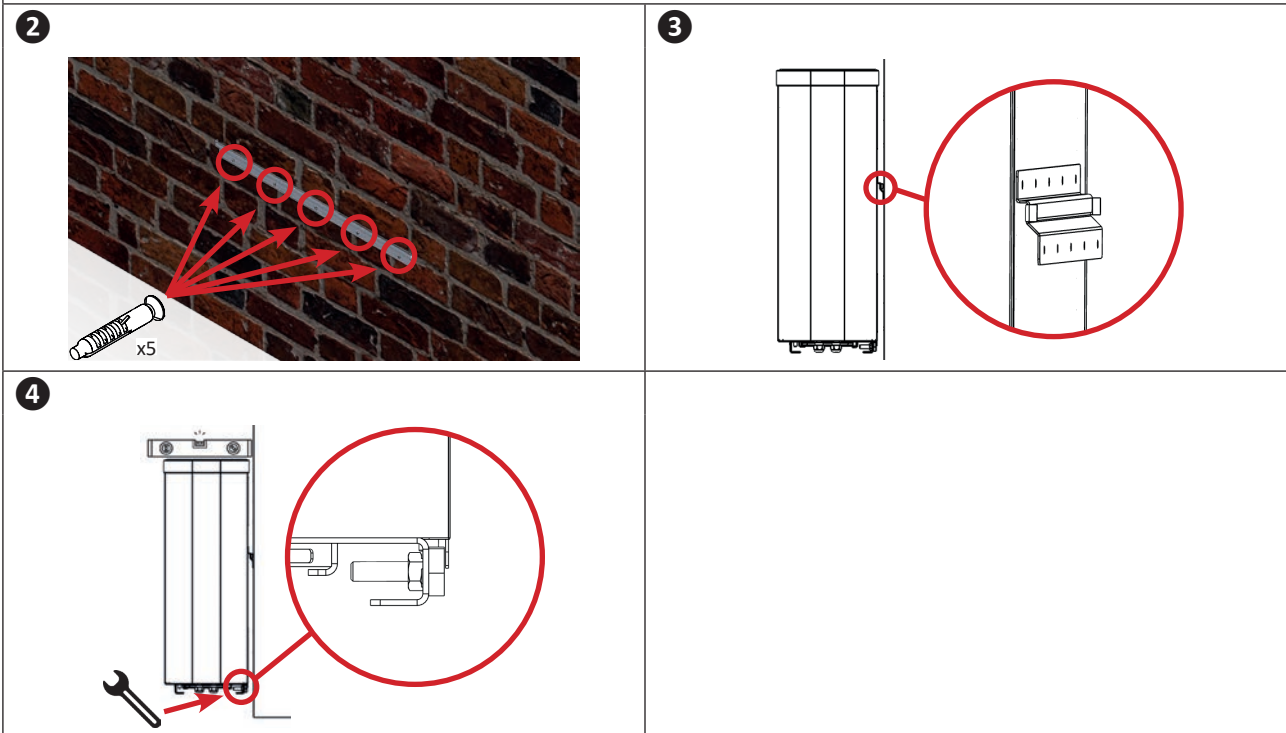
- The appliance must be mounted on a wall to avoid any risk of tilting, even when it is fitted with a base.



- To mount the appliance on a (solid) wall, follow these steps:



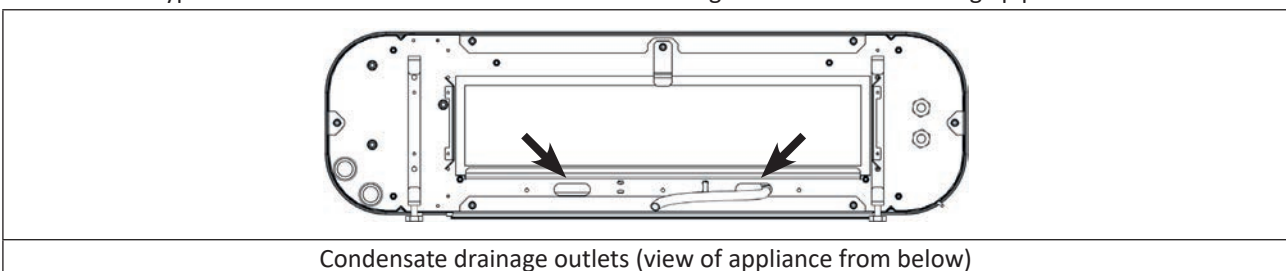
\*Distance to be respected when the dehumidifier is mounted on the base. If this is not the case, this distance can be increased.



EN

### 2.3 | Connection of the condensate drainage line

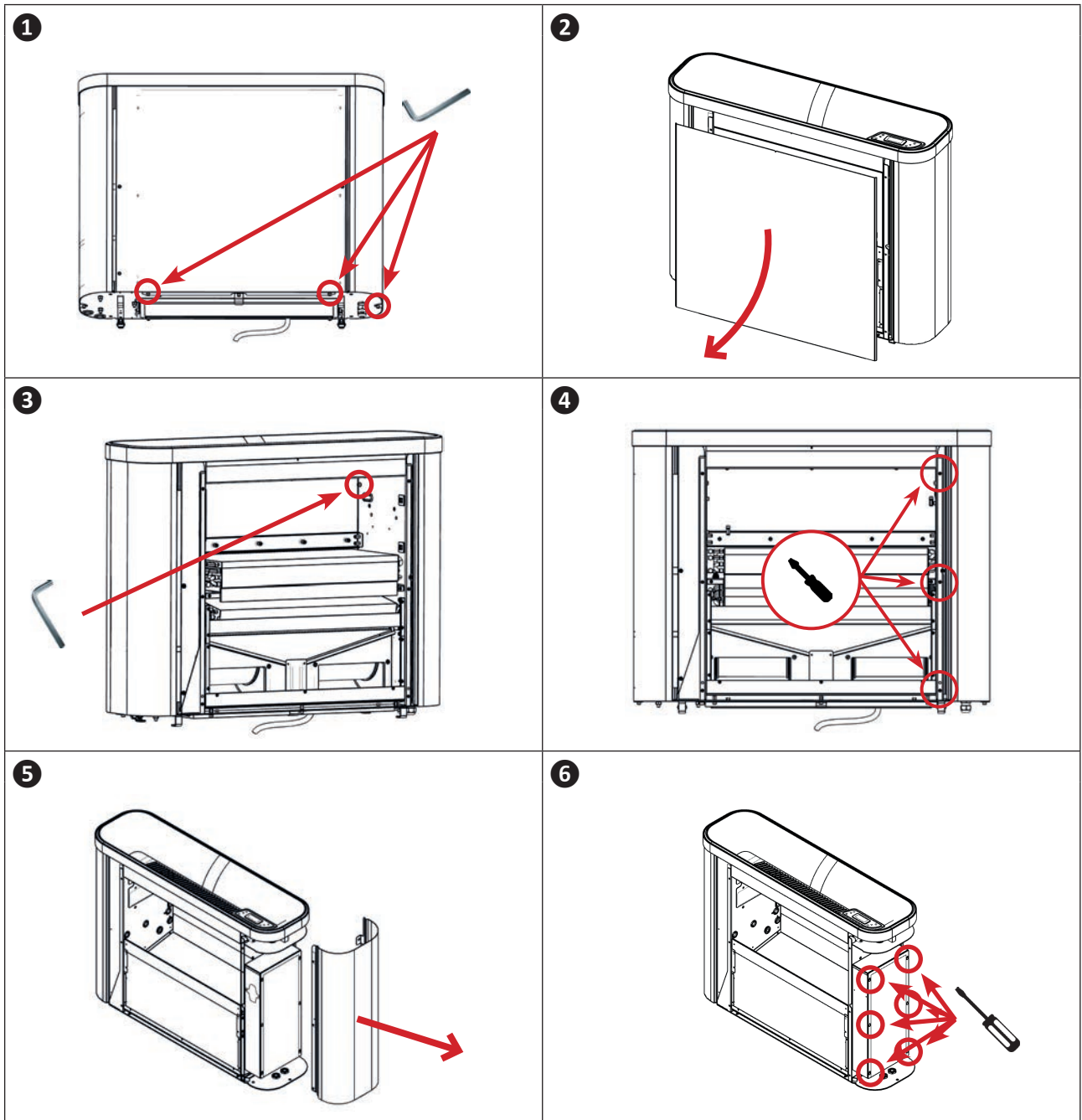
- The angle should be sufficient to ensure a correct flow.
- Drainage takes place through the intermediary of a syphon or funnel.
- Outlets underneath the appliance.
- Ensure the syphon is filled with water so as to avoid air entering the condensate drainage pipe.



#### Tip: condensate drainage

Caution, several litres of water can be drained from your appliance each day. We strongly recommend connecting the drain to a suitable water drainage system.

➤ 2.4 | Access to the electrical connection terminal boards



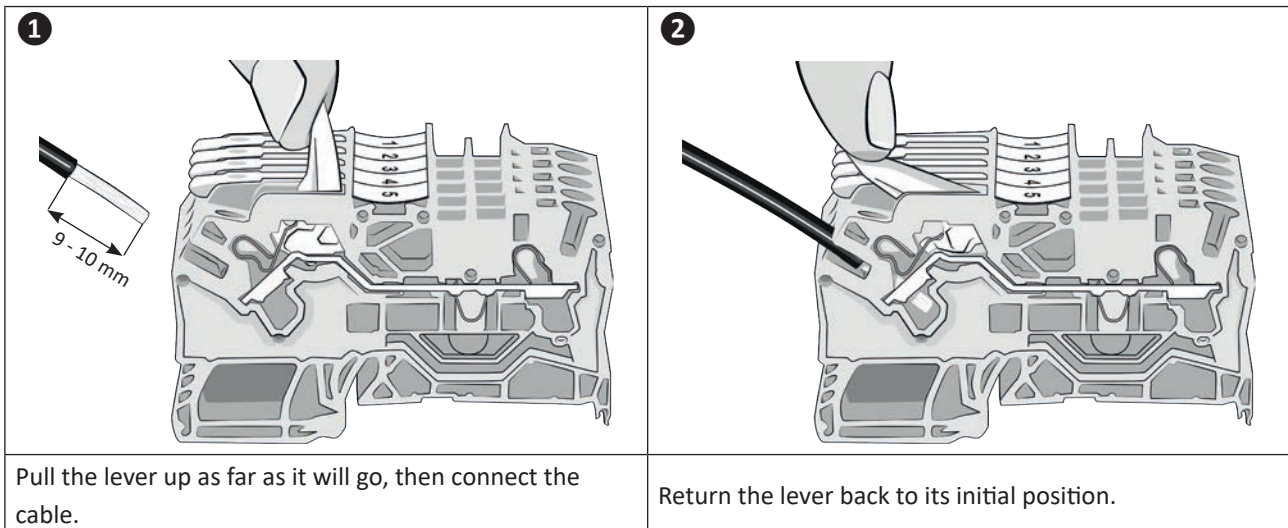
## 2.5 I Electricity supply connections



- Before any work inside the appliance, you must cut the appliance's electricity supply as there is a risk of electric shock which may cause material damage, serious injury or even death.
- Incorrectly tightened terminals may cause the terminal box to heat up, which can invalidate the warranty.
- Only a qualified and experienced technician is authorised to carry out cabling work within the appliance or to replace the power cord.
- The installer must consult the electricity provider if necessary and ensure that the equipment is connected correctly to an electricity network with impedance under 0.095 ohm.

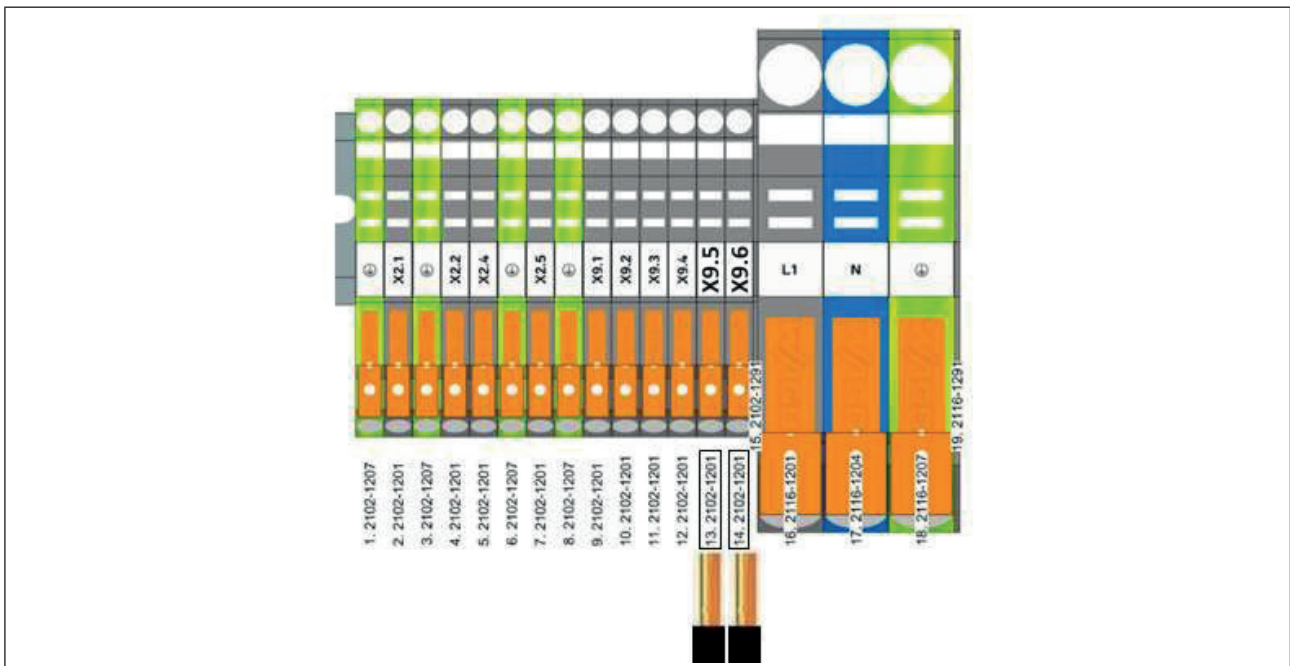
- The dehumidifier's electrical supply must be provided through a protection and circuit breaking device (not supplied) complying with the standards and regulations in force in the country in which it is installed.
- The appliance is provided for connection to a general power supply with a TT or TN-S neutral regime.
- Electrical protection: by circuit breaker (D curve, rating to be defined according to the table in §"1.3 I Technical specifications"), with a suitable dedicated residual-current device (circuit breaker or switch).
- Additional protection may be required during installation to guarantee the overvoltage category II.
- The power supply must correspond to the voltage indicated on the appliance's information plate.
- The power cord must be insulated against any cutting or hot elements that may damage or crush it.
- The appliance must be connected to an earth socket.
- The electrical connection lines must be fixed.
- Use the gland to pass the power cord into the appliance.
- Use the power cord (RO2V type) adapted for outdoor or buried use (or run the cable into a protection duct) with an external diameter of between 9 and 18 mm.
- We recommend burying the cable at a depth of 50 cm (85 cm under a road or path) in an electrical duct (red ribbed).
- If this buried cable meets another cable or pipe (gas, water, etc.), there must be more than 20 cm between them.
- Connect the power cord to the spring connector terminal board inside the appliance, as shown below:

EN



### 2.5.1 Connecting the pool shutter switch

- Connect the pool shutter contact cables to terminals X9.5 and X9.6 as shown below.



## 2.6 | Option connections



### Option mounting and activation :

- Refer to the installation and use manual supplied with the option.

#### 2.6.1 "Hot water coil" option

- This option allows the dehumidifier to be used to heat the air in the room in which it is installed. A primary hot reservoir (exchanger, boiler, geothermal heat...) has to be mounted upstream. To do so, use the "hot water coil" kit available as an accessory.
- For the connection, consult the manual supplied with the kit.

#### 2.6.2 "Electric heater" option

- This option allows the dehumidifier to be used to heat the air in the room in which it is installed. To do so, use the "Electric heater" kit available as an accessory.
- For the connection, consult the manual supplied with the kit.

#### 2.6.3 "Remote control" option

- This option enables the appliance's user interface to be transferred in order to control the appliance remotely. To do so, use the "remote control" kit available as an accessory.
- For the connection, consult the manual supplied with the kit.



## 3 Use

Your dehumidifier operates based on a heat pump with extraction of the warm, humid air in the pool room and delivery of dryer, hotter air.

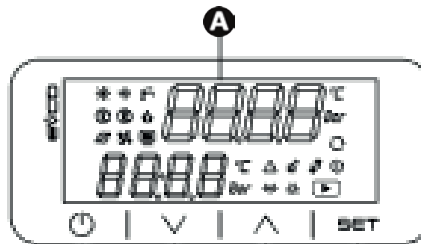
It is ideal for maintaining a humidity level that is between 60% and 70%.

When the humidity level is lower than 60%, this leads to a feeling of excessive cold when leaving the water.

When it is higher than 70%, this leads to too much moisture and condensation in the room.

### 3.1 | User interface presentation

#### 3.1.1 Presentation of the display screen and function keys









EN

|  | Description   |
|--|---|
|  | Multi-function display                              |
|  | "On/off" or "back" key                              |
|  | "Up" or (de)activation key for the heating function |
|  | "Down" or (de)activation key for the "Silence" mode |
|  | "Adjustment" or "confirm" key                       |

#### 3.1.2 Description of the display screen

| Symbol | Description      | Steady                          | Flashing         | Off                    |
|--------|------------------|---------------------------------|------------------|------------------------|
|        | On/Off           | Appliance switched off          | /                | Appliance in operation |
|        | Dehumidification | Appliance in dehumidifying mode | Appliance timed  | /                      |
|        | Heating          | Appliance in heating mode       | /                | /                      |
|        | Defrosting       | Defrosting active               | /                | /                      |
|        | Settings         | Appliance in "settings" mode    | /                | /                      |
|        | Test mode        | Test mode activated             | /                | /                      |
|        | Compressor       | Compressor on                   | Compressor timed | Compressor idle        |
|        | Fan              | Fan(s) on                       | Fan timed        | Fan(s) off             |



|   |                                    |  |   |                     |
|---|------------------------------------|--|---|---------------------|
|  | Electric heater                    | Electric heater heating                            | / | Electric heater off |
|  | Circulator (hot water coil option) | Circulator on                                      | / | Circulator idle     |
|  | Alarm                              | Alarm in progress                                  | / | /                   |
|  | Celsius                            | Appliance configured to measure in degrees Celsius | / | /                   |
|  | "Manual" mode                      | Programming using "manual" mode.                   | / | /                   |
|  | Humidity level percentage          | Appliance configured as a humidity sensor          | / | /                   |

## ➤ 3.2 | Operation

### 3.2.1 Switching on the appliance



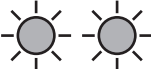
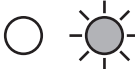
- Power on the appliance (by switching on the general terminal board),
- The program version remains visible for 5 seconds then "OFF" and "KEY" is displayed before the appliance starts.

Only on Sirocco 5T models (three phased):



- **This operation must be only be carried out by a qualified professional.**
- **The phase order controller protects the compressor. It is forbidden to invert phases:**
  - On the power contactor.
  - On the compressor.

- When the dehumidifier is switched on, check the status of the phase order controller as shown below:


|                               |   |   |
|-------------------------------|---|---|
|                               |                |                |
| <b>Indicator light status</b> | <b>OK~</b><br> | <b>OK~</b><br> |

- If there is a phase inversion or missing phase:
  1. Disconnect the appliance from the power supply;
  2. Invert two phases directly on the appliance connection terminal board;
  3. Restore power to the appliance and check the status of the indicator lights.



### 3.2.2 Starting the appliance








- Press and hold (longer than 3 seconds) .
- The screen displays all of the symbols along with an audible beep. The value displayed on the screen corresponds to the relative humidity (%). The ambient temperature can also be simultaneously displayed (°C). To do this, just set the heating mode to "Hetr" or "coil". (see §3.3.2 "Configuring the heating mode").

EN

### 3.3 | Appliance configuration

When the dehumidifier is installed, it must be configured to ensure optimal operation best adapted to the conditions of use. This can be done via the "EASY" menu (access reserved for qualified professionals and requiring an access code).

To access and browse the menus:









- Press and hold (longer than 3 seconds) .
- Browse using the  and  keys.
- Press  to confirm (go to a sub-menu or confirm a selection).
- Press  to go back to the previous screen.

#### Information: list of menus



| Menu      | Description  | Restriction  |
|-----------|--|--|
| USER      | Menu dedicated to users for managing setpoints   | /  |
| EASY      | Menu intended for qualified professionals so that they can configure the appliance after the initial installation and/or adding an option. | Reserved for qualified professionals and requiring an access code. |
| INIT PARA | Information menu dedicated to the appliance's status and basic settings  |  |
| ADVI      | Menu dedicated to the appliance's advanced settings ("Read" mode)  |  |
| ADVDr     | Menu dedicated to the appliance's advanced settings ("Write" mode)   |  |

#### 3.3.1 Configuring the ventilation mode

- In the "EASY" menu, browse with the  or  keys until you reach the "P16" setting, then press  to confirm.
- Using the  or  keys, choose the desired ventilation mode:
  - 0 = intermittent ventilation. The ventilation comes on every 30 seconds for 5 minutes.
  - 1 = permanent ventilation (default setting). The ventilation is always on.
- Press  to confirm.
- Press  to go back to the previous screen.
- Press  a number of times to return to the home screen.



#### **Information: the importance of the ventilation mode**

- Ventilation helps to ensure that air circulates correctly, meaning that the temperature and humidity levels are more even throughout the room.
- Bathing comfort can be significantly and economically improved by improving ventilation.

### **3.3.2 Configuring the heating mode**

When installing a heating kit ("electric heater" or "hot water coil"), the appropriate heating mode setting must be used.

- In the "EASY" menu, browse with the or keys until you reach the "P44" setting, then press to validate.
- Using the or keys, choose between "dsbl", "Hetr" or "coil".
  - dsbL = no heating option.
  - Hetr = electric heater (default setting).
  - coil: hot water coil.
- Press to confirm.
- Press to go back to the previous screen.
- Press a number of times to return to the home screen.

#### **Information: home screen update**

- When the heating kit is confirmed ("electric heater" or "hot water coil") the home screen is updated with the simultaneous display:
  - The relative humidity level (%),
  - The ambient temperature (°C or F°) in the pool room.



Only the heating mode is confirmed at this stage of the configuration. The function will then have to be activated or deactivated from the home screen:

#### To enable the heating option:

- Press and hold (longer than 3 seconds) the key, the screen shows "CHU ON".
- Enabling the heating option is visible on-screen thanks to the symbol.



- The symbol indicates that the heating is activated but not necessarily active. The only indication that the heating function has started is when the or LED is lit.

#### To disable the heating option:

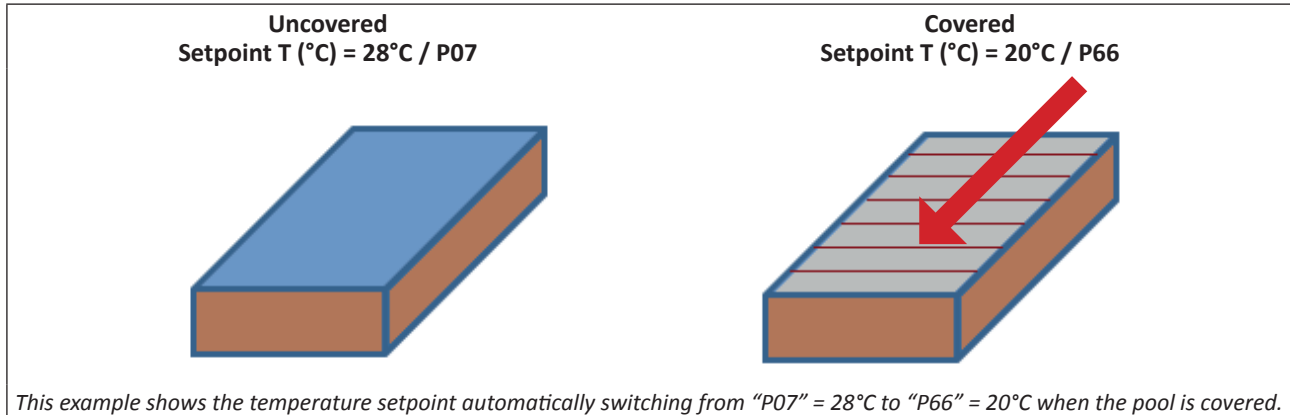
- Press and hold (longer than 3 seconds) the key, the screen shows "CHU OFF".

### 3.3.3 Configuring pool shutter mode

The pool shutter mode is used to adapt the dehumidifier and heating functions to the pool status (covered/not covered).

When the shutter is detected as closed, the heating setpoint temperature switches to the (lower) point defined in setting P66 (see § 3.4.3 "Configuring setpoint temperatures").









This setting helps to reduce energy consumption during periods when no one is swimming.



EN

To activate this function you will have to:

1. First connect the pool shutter switch (see §2.5.1 "Connecting the pool shutter switch");
2. Activate the pool shutter mode:

- In the "EASY" menu, browse with the  or  keys until you reach the "P67" setting, then press  to confirm.
- Using the  or  keys, select:
  - Yes = activate the automatic shutter mode (default setting).
  - No = deactivate the automatic shutter mode.
- Press  to confirm.
- Press  to go back to the previous screen.
- Press  a number of times to return to the home screen.

#### **Information: advantages of the pool shutter function**











- When the shutter is detected as fully closed no more pool water can evaporate. The dehumidification function is then automatically deactivated.
- If a dehumidification process is ongoing when the pool is covered, the function will only be deactivated once the humidity setpoint has been reached.


### 3.3.4 Configuring the test mode

Once the installation of the dehumidifier is finished, the installer can check the appliance in test mode. This mode is used to force the dehumidification functions (and the heating kit, if installed).









To activate/deactivate the test mode:

- In the "EASY" menu, browse with the  or  keys until you reach the "P25" setting, then press  to confirm.
- Using the  or  keys, select:
  - 0 = stop test mode (default settings)
  - 1 = start test mode.
- Press  to confirm.
- Press  to go back to the previous screen.
- Press  a number of times to return to the home screen.




- When the test mode is activated, the  symbol is displayed.

To set the test mode duration:



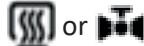

- In the "EASY" menu, browse with the  or  keys until you reach the "P26" setting, then press  to confirm.
- Using the  or  keys, choose the desired duration (in minutes). The default duration is 30 minutes. Note that the duration must be set before running the test mode. Changes to this setting during the test will only be taken into account later.
- Press  to confirm.
- Press  to go back to the previous screen.
- Press  a number of times to return to the home screen.



- If the test mode is manually stopped prematurely ("P25" = 0), the  symbol remains on the screen until "P26" has counted down.

Several checks can be performed in test mode:

- Check that hot air is coming out of the appliance's blower grids.
- Check that the following symbols are displayed:

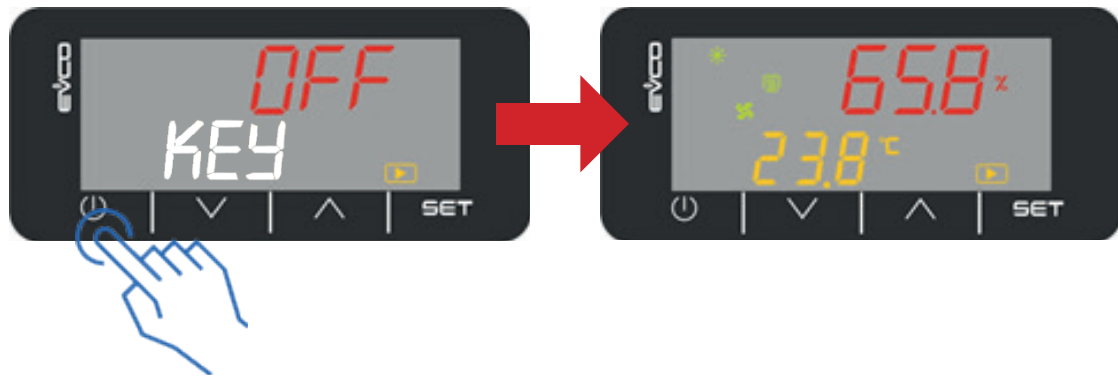
| Dehumidification  | Heating  |
|---|--|
|  |  |
|  |  or  |


Depending on the test conditions, checking the condensate drainage is not mandatory.

## 3.4 | User functions

### 3.4.1 Switching the appliance on and off

To switch the appliance on:

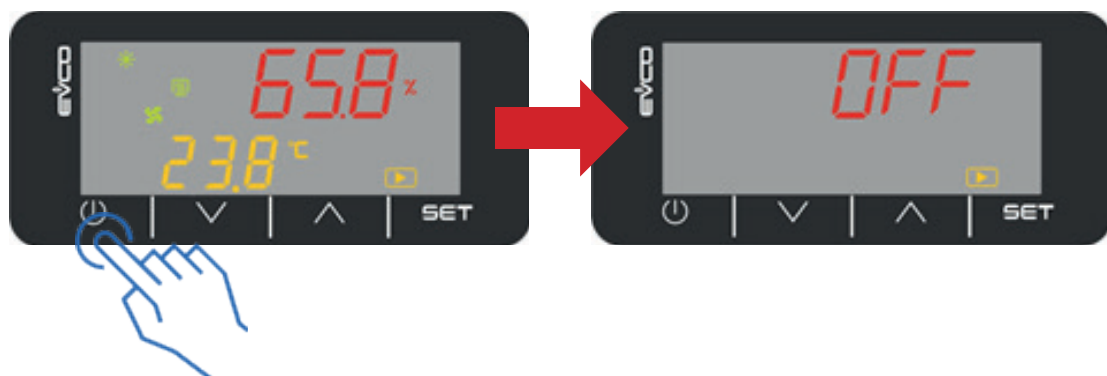



- Press and hold (longer than 3 seconds) .
- The screen displays all of the symbols along with an audible beep. The value displayed on the screen corresponds to the relative humidity (%). The ambient temperature can also be simultaneously displayed (°C). To do this, just set the heating mode to "Hetr" or "coil". (see §3.3.2 "Configuring the heating mode").



- The displayed values can change significantly when the ventilation is started with the intermittent ventilation setting.

To switch the appliance off:



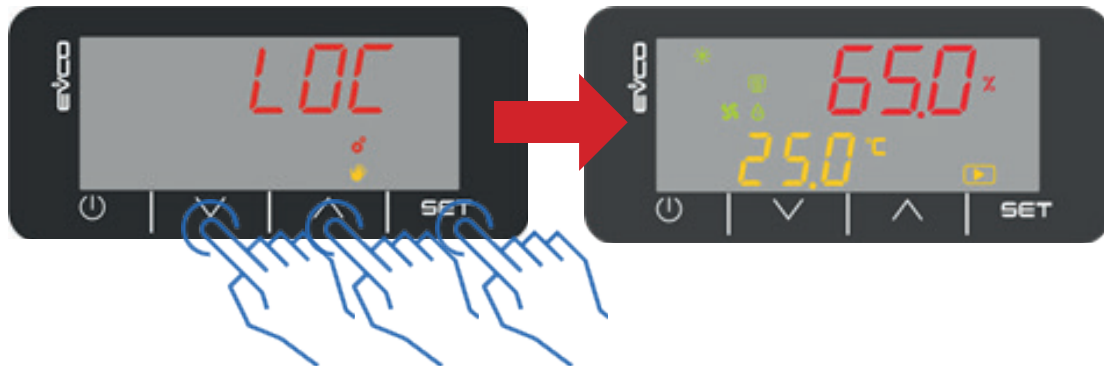
- Press and hold (longer than 3 seconds) .




### 3.4.2 Unlocking the keyboard

If the “Lock keyboard” option is activated, when no key has been pressed for 10 seconds, the keyboard automatically locks.












When a key is pressed, “LOC” is displayed.


To unlock the keyboard:



- Press and hold down (longer than 3 seconds) one of the following keys: ,  or .
- “ULOC” is displayed after the screen is unlocked.

### 3.4.3 Configuring setpoint temperatures

- Press and hold (longer than 3 seconds) .
- Browse with the  or  keys until you reach the “USER” menu, then press  to validate.
- Browse with the  or  keys until you reach the setting to change (refer to the “Information: list of setpoint settings” heading below) then press  to validate.
- Set the setpoint to the chosen temperature using the  or  keys, then press  to confirm.
- Press  to go back to the previous screen.

Press  a number of times to return to the home screen.

#### Information: list of setpoint settings



| Setting | Description  |
|---------|--|
| P4      | Dehumidification setpoint                              |
| P7      | Heating setpoint                                       |
| P66     | Heating setpoint (handling the automatic shutter mode) |

### 3.4.4 Activation/deactivation of "Silence" mode

The "Silence" mode is used to reduce the appliance's noise level by lowering the ventilation speed when the dehumidifying and/or heating functions are activated.

When the "Silence" mode is activated, the appliance's dehumidifying capacity deteriorates slightly.




#### **Information: "Silence" mode = ZEn**

- On the appliances' display, the "Silence" mode is named "ZEn".

To activate the "Silence" mode:



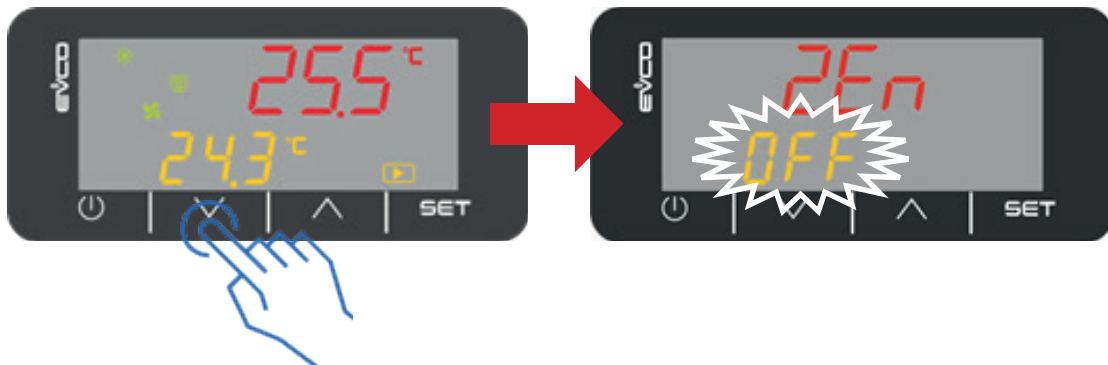
EN


- Press and hold (longer than 3 seconds) .
- The display shows the status of the "Silence" mode ("ZEn" + "On") by flashing 3 times and then returns to the initial screen.



- The duration of the "Silence" mode is set at 2 hours. The "Standard" mode is automatically reactivated after this 2 hour period to restore a suitable dehumidification regime; a new "Silence" mode cycle can be reactivated if the measured humidity level is satisfactory.

To deactivate the "Silence" mode:



- Press and hold (longer than 3 seconds) .
- The display shows the status of the "Silence" mode ("ZEn" + "OFF") by flashing 3 times and then returns to the initial screen.



#### **Tip: using the "Silence" mode**

- If the relative humidity that is measured, at any moment, is higher than the level recommended for user comfort or the building's viability, the "Silence" mode will stop automatically to ensure an adequate level of dehumidification.



## 4 Maintenance

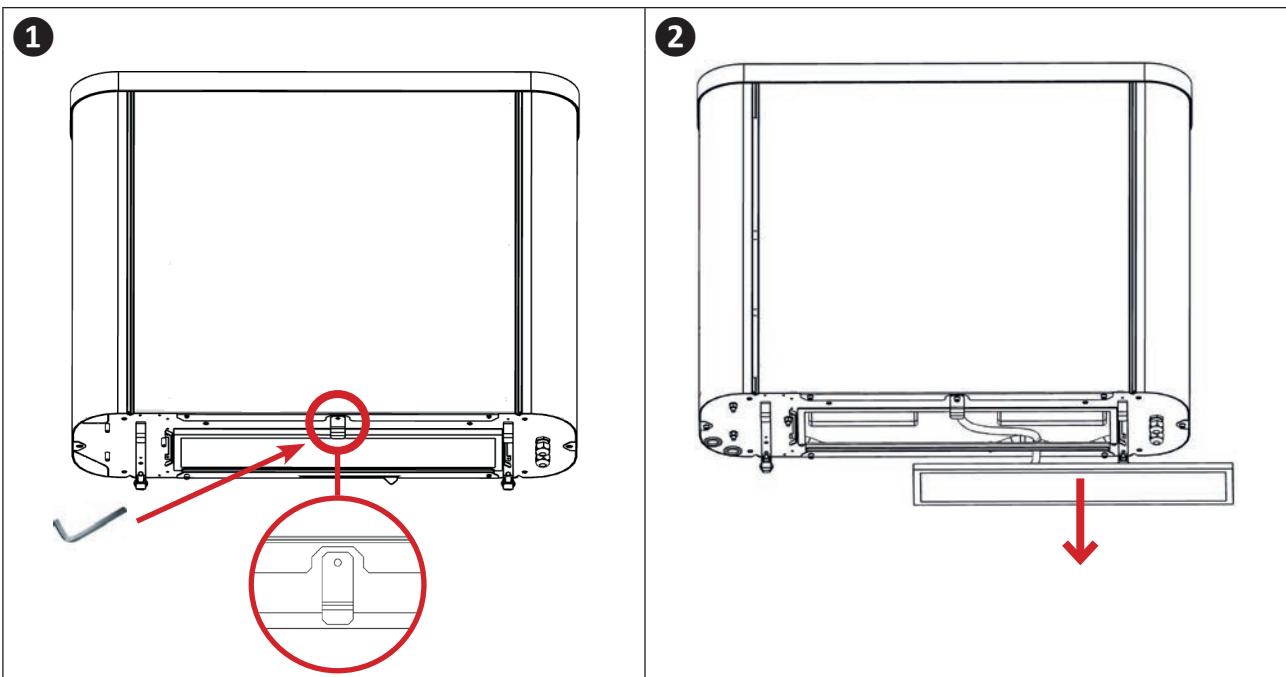
### 4.1 | Maintenance



- Before any maintenance work on the appliance, you must cut the electricity supply as there is a risk of electric shock which may cause material damage, serious injury or even death.
- It is recommended that the appliance undergo general servicing at least on a yearly basis to ensure its proper operation, maintain performance levels and prevent any possible failures. These operations are carried out at the user's expense, by a qualified technician.

#### 4.1.1 Monthly user maintenance

- Visually check the condensate drainage and check that the drainage tube is correctly positioned.
- Check for clogging in the filters:
  - Manually remove any accumulated fibres and dust. Vacuum if necessary.
  - Wash the filter with warm soapy water and leave to dry.
  - If necessary, replace the filter by removing it as shown below (the filter is fixed by a bracket that must be unscrewed):



- The correct maintenance of the appliance is helped by the display of a filter maintenance message which is programmed in relation to the ventilation time.



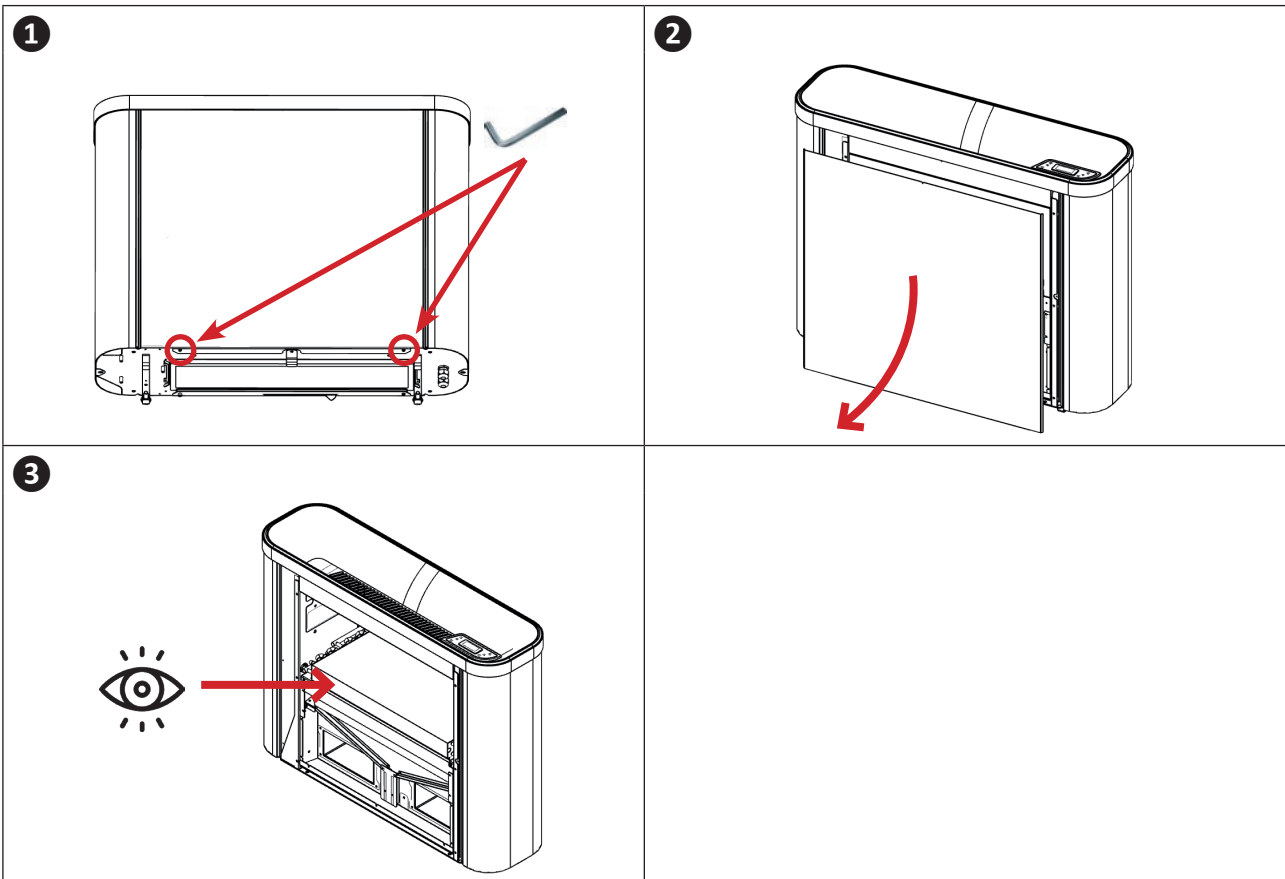
#### 4.1.2 Annual maintenance to be performed by a qualified technician

- Check that the electric cable connections are correctly tightened to their terminals on the terminal board, in addition to the contactor screws,
- Check that each command relay and power contactor is operational.



- On the Sirocco 5T, thanks to the phase order controller, any modification of the sequence of phases on the distribution network or on the existing electrical installation is detected. The appliance then goes into fault mode (see 5.2 "Alarm display").

- Clean the outside of the whole unit with a slightly damp cloth.
- Check the cleanliness of the condensation tray and drainage tube,
- A visual inspection of coil clogging (evaporator/condenser and hot water) can improve the appliance's performance, and is performed by following the disassembly procedure below (when powered off) :




EN

- Depending on the condition, clean with a bristle brush and vacuum cleaner.



## 5 Troubleshooting



- Before you contact your retailer, please carry out these few simple checks using the following tables if a problem occurs.
- If the problem persists, contact your retailer.
-  : Actions to be performed by a qualified technician only

### 5.1 | Appliance behaviour

|  |   |
|--|---|
| The appliance is discharging water   | <ul style="list-style-type: none"> <li>• Your appliance is discharging water, known as condensates. This water is the humidity your dehumidifier condenses to dry the air.</li> </ul>   |
| The appliance is working but the windows are covered in water                    | <ul style="list-style-type: none"> <li>• This is the dew point, which is the point at which the water vapour contained in the air changes states when in contact with a cold surface. This is known as the phenomenon of condensation. This does not mean your appliance is not working. This phenomenon is normal, because of the presence of humidity in the air (65% humidity in comfortable conditions), and a cold outside temperature.</li> </ul> |
| The dehumidifier blows hot air even though the heating is absent or deactivated  | <ul style="list-style-type: none"> <li>• The dehumidification function is based on the thermodynamic principle which transforms part of the absorbed energy into heat, which is then transferred to the ventilated air flow.</li> </ul>   |
| The appliance begins defrosting  | <ul style="list-style-type: none"> <li>• The dehumidifier's cooling circuit is affected by the local operating conditions. Lower temperatures and the moisture content of the ambient air are more likely to create frost.</li> <li>• To ensure its correct operation, the appliance eliminates all traces of frost by initiating a short defrosting cycle lasting a few minutes.</li> </ul>  |
| The blown air is warmer in "Silence" mode  | <ul style="list-style-type: none"> <li>• The noise level drops at the same time as the ventilation speed. In fact, the same amount of heat is transmitted with a lower air flow. The blown air is therefore warmer.</li> </ul>  |
| The ventilation stays on even when the setpoint temperature(s) have been reached | <ul style="list-style-type: none"> <li>• Ventilation continues for a few minutes after the temperature and humidity setpoints have been reached. This optimises the appliance's efficiency by evacuating the residual calories in the batteries that are still hot.</li> </ul>  |

### 5.2 | Error code display

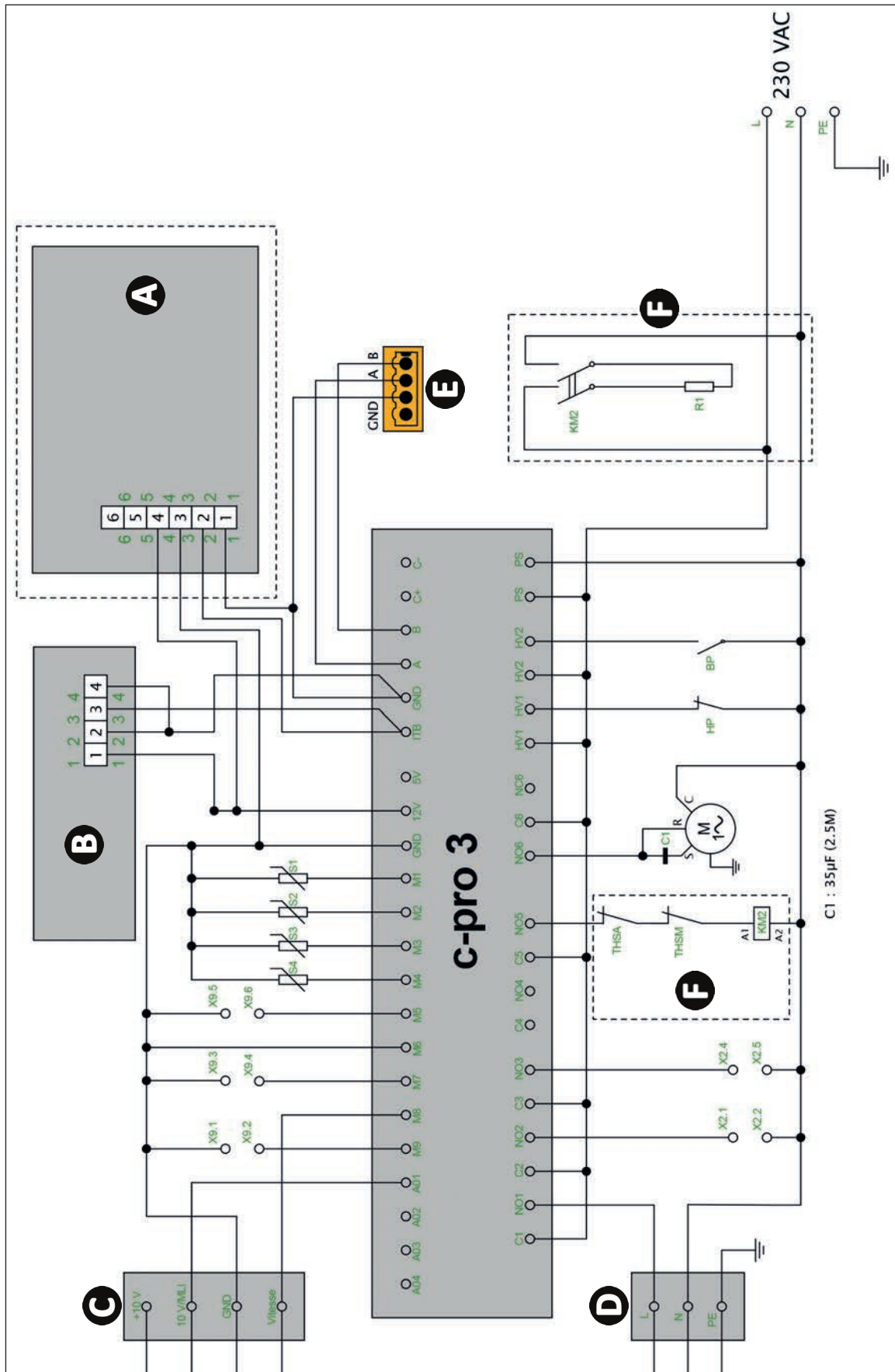
| Code | Description                            | Possible cause   | Resetting  |
|------|--|--|------------|
| A01  | Faulty Humidity sensor                 | <ul style="list-style-type: none"> <li>• Sensor has short circuited.</li> <li>• Sensor disconnected.</li> <li>• Faulty sensor (replace sensor).</li> </ul> | Automatic  |
| A02  | Faulty Ambient temperature sensor      | <ul style="list-style-type: none"> <li>• Sensor has short circuited.</li> <li>• Sensor disconnected.</li> <li>• Faulty sensor (replace sensor).</li> </ul> | Automatic  |
| A03  | Faulty Temperature sensor - evaporator | <ul style="list-style-type: none"> <li>• Sensor has short circuited.</li> <li>• Sensor disconnected.</li> <li>• Faulty sensor (replace sensor).</li> </ul> | Automatic  |
| A04  | Faulty Temperature sensor - blower     | <ul style="list-style-type: none"> <li>• Sensor has short circuited.</li> <li>• Sensor disconnected.</li> <li>• Faulty sensor (replace sensor).</li> </ul> | Automatic  |
| A05  | Ambient temperature too high           | <ul style="list-style-type: none"> <li>• Temperature outside range of operation.</li> <li>• Faulty sensor.</li> </ul>                                      | Automatic  |
| A06  | Ambient temperature too low            |  | Automatic  |
| A07  | Filter maintenance                     | <ul style="list-style-type: none"> <li>• Reminder for filter maintenance.</li> </ul>   | Automatic  |
| A13  | Blowing temperature too high           | <ul style="list-style-type: none"> <li>• Clogged filter.</li> <li>• Faulty sensor.</li> <li>• Faulty fan.</li> </ul>                                       | Automatic  |
| A14  | High pressure                          | <ul style="list-style-type: none"> <li>• Clogged filter.</li> <li>• Obstructed air inlet.</li> <li>• Cooling circuit problem.</li> </ul>                   | Automatic* |
| A15  | Low pressure                           | <ul style="list-style-type: none"> <li>• Cooling circuit problem.</li> </ul>   | Automatic* |
| A16  | Fan speed                              | <ul style="list-style-type: none"> <li>• Faulty fan.</li> </ul>  | Automatic* |

### 5.3 I Settings

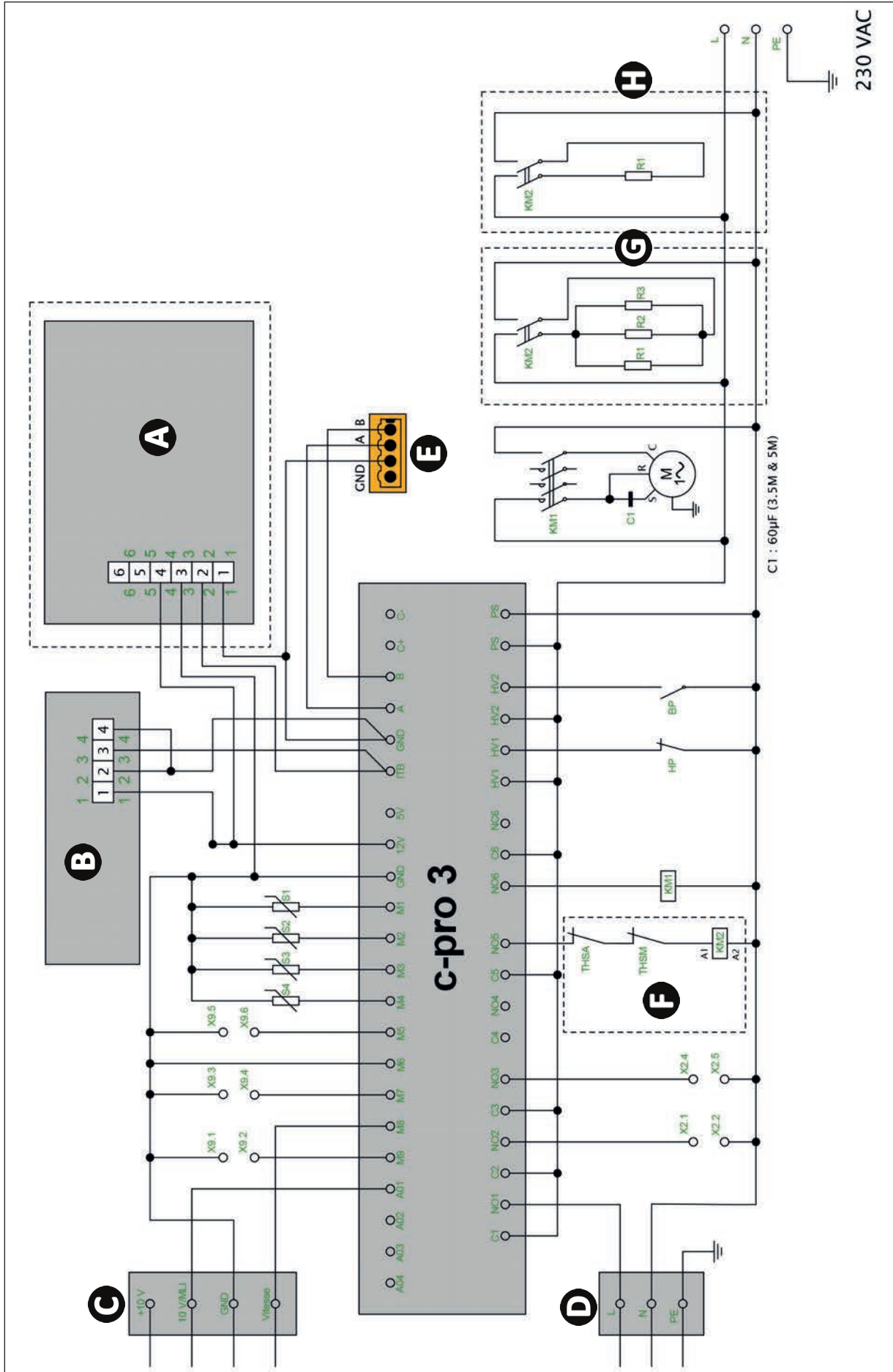
| Menu      | Setting | Description             | Unit/Values   |
|-----------|---------|-------------------------|---|
| User      | P4      | Humidity setpoint       | %   |
| User      | P7      | Heating setpoint        | °C  |
| Easy Inst | P16     | Type of ventilation     | <ul style="list-style-type: none"> <li>• Intermittent</li> <li>• Permanent</li> </ul>   |
| Easy Inst | P25     | Test mode: "Stop/Start" | <ul style="list-style-type: none"> <li>• 0 = Stop</li> <li>• 1 = Start</li> </ul>   |
| Easy Inst | P26     | Test mode: duration     | Minutes   |
| Easy Inst | P44     | Type of heating         | <ul style="list-style-type: none"> <li>• dsbL = No heating option</li> <li>• Hetr = Electric heater</li> <li>• coiL = Hot water coil</li> </ul> |
| User      | P66     | Heating setpoint        | °C  |
| Easy Inst | P67     | Shutter mode            | <ul style="list-style-type: none"> <li>• 0 = No</li> <li>• 1 = Yes</li> </ul>   |

## 5.4 I Wiring diagrams

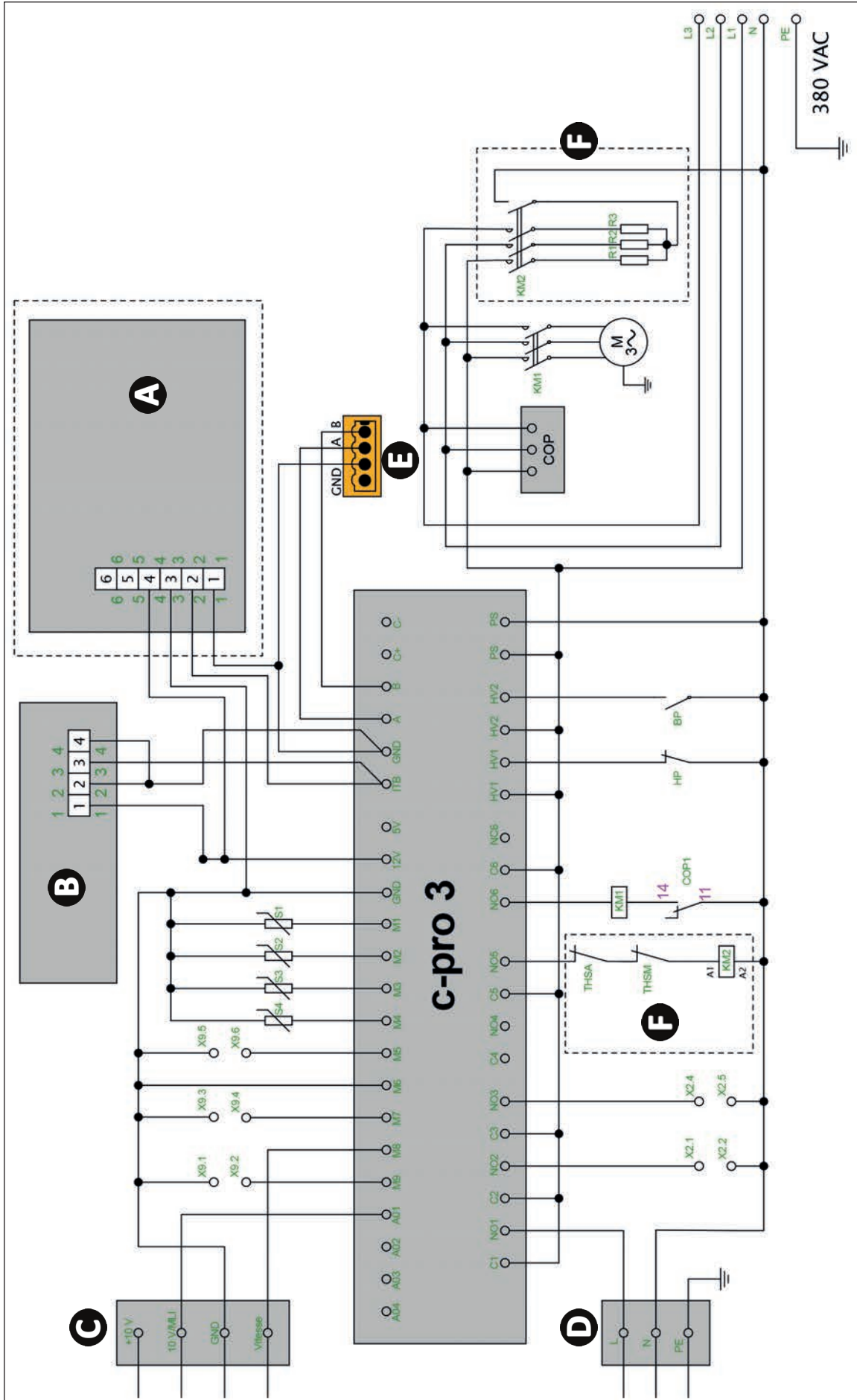
### 5.4.1 SIROCCO<sup>2</sup> 2M



5.4.2 SIROCCO<sup>2</sup> 3M - 5M



5.4.3 SIROCCO<sup>2</sup> 5T



| Symbol   | Description                     |
|----------|---------------------------------|
| HV1      | HP switch                       |
| HV2      | LP switch                       |
| M7       | Heating priority                |
| M9       | Remote ON/OFF                   |
| M5       | Pool shutter status             |
| M6       | Fan thermal switch              |
| M8       | Fan speed reading               |
| C1       | Fan                             |
| C2       | Circulator                      |
| C3       | Alarm                           |
| C4       | /                               |
| C5       | Electrical resistor             |
| C6       | Compressor                      |
| COP      | Check the order of the phases   |
| KM1      | Compressor contactor            |
| KM2      | Contacteur for electric option  |
| M1       | Humidity sensor                 |
| M2       | Room sensor                     |
| M3       | Evaporator sensor               |
| M4       | Air outlet sensor               |
| A01      | Fan                             |
| A02      | /                               |
| A02      | /                               |
| A04      | /                               |
| A        | MODBUS +                        |
| B        | MODBUS -                        |
| <b>A</b> | Remote display EVJ LCD          |
| <b>B</b> | Local display EV3K              |
| <b>C</b> | CON11 fan                       |
| <b>D</b> | CON10 fan                       |
| <b>E</b> | MODBUS connector                |
| <b>F</b> | Electric heater option          |
| <b>G</b> | Kit 5M : Electric heater option |
| <b>H</b> | Kit 3M : Electric heater option |

Votre revendeur  
*Your retailer*

Modèle appareil  
*Appliance model*

Numéro de série  
*Serial number*

|  |
|--|
|  |
|  |
|  |

Pour plus d'informations, enregistrement produit et support client :  
*For more information, product registration and customer support:*

**[www.zodiac.com](http://www.zodiac.com)**

