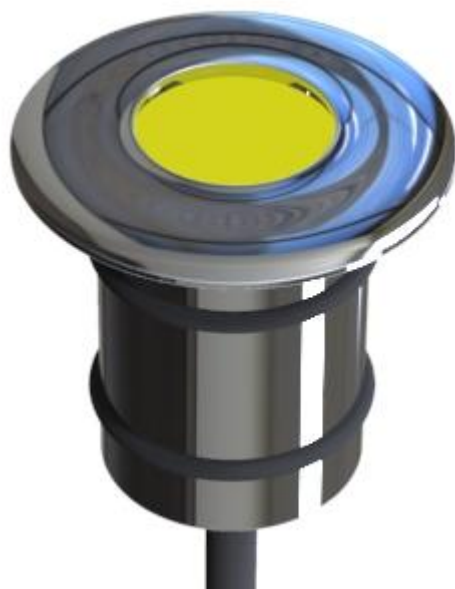


# **Instruction Manual**



## **LED Spot Pool Light**



### Technical Specification

Standard input voltage: 12V AC/DC (Range: 12VAC or DC)

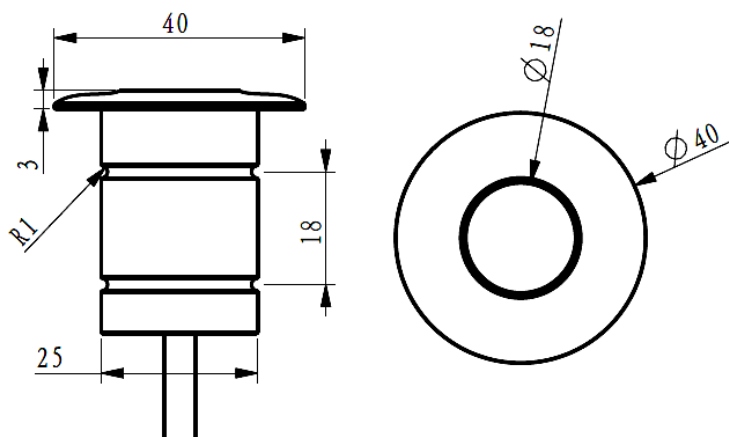
Standard input watt:

White
2W

Use life: 60,000 hours

16 programs with Synchronization capability

### Dimension

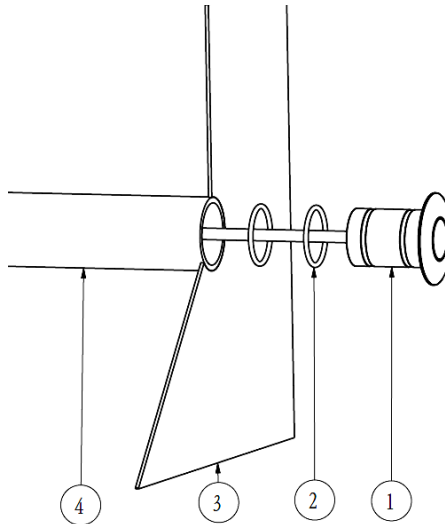


### Packing Contents

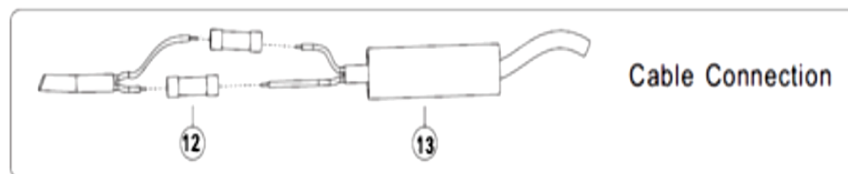
The following items are included in the box:

Lamp Assembly	x1
Seal Ring	x2
Specifications	x1

## Concrete Pool



### Cable Connection



NO.	Part Description	Quantity
1	LED lamp	1
2	Seal ring	2
3	Wall	1
4	1 Inches Water Pipe	1
12	Wire connector	2
13	Rubber coating protector	1

\*\*

\*\*

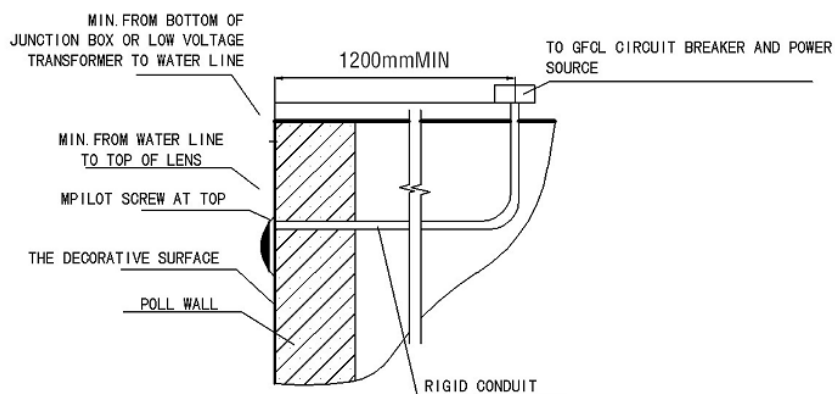
\*

\*

The parts marked with \* are not included and need to be bought separately.

The parts marked with \*\* are not included.

The drawing below shows how to connect the cable from the lamp to the power source.



Installation Diagram

## Instruction & Use

The lights must be used/operated while fully submerged underwater only.

- This lamp is designed to be fixed in new pools and/or pools with existing surface-mounted lamps that need replacement.
- This lamp is designed to be used only once. Should it become defective, repair is impossible, and replacement is necessary.
- The manufacturer is not responsible in any circumstances for assembly, installation, or start-up of any electric components which have been inserted or handled at locations other than its own premises.

## Installation

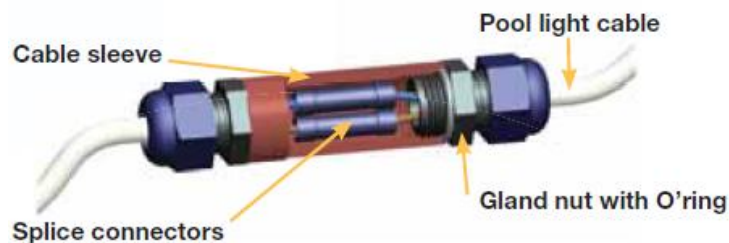
All lamps should be placed on the wall of the pool below the water surface, in areas that are easily accessible from the upper edge of the pool.

- All lamps should be installed on the same transformer and switch.
- The lights can be installed for both concrete pools and fiber pools.
- The lamp is supplied with a cable of 2m, 4m, 6m, 10m, 16m, or 20m according to the needs of the user, making it possible to install multiple lamps connected to a single junction box.

## Maintenance & Replacement

There is no maintenance required for this lamp – it is designed to be used only once, meaning that replacement is necessary if it becomes defective (repairing is impossible). Before any handling, ensure that there is NO voltage supplied to the lamp. To replace, unfasten the lamp from the bracket. Ensure the new lamp is of the same model and characteristics as the one being replaced.

If the cable pipes you use have an inner diameter of 26mm or more, you can use the retrofit connector to connect the cable easily. Crimp both connections with the splice connectors, slide the cable sleeve over the connection, and hand-tighten the gland nuts. Then hide the retrofit connector in the pipe. The retrofit connector is ordered separately.



## Start-up

- The lamp should only operate underwater while secured to the vertical walls of the pool.  
**Never switch on the light if it is not underwater.**
- In case of colored lamps, 16 pre-programmed effects and combinations may be selected using the on/off switch of your pool lights. Just switch off and switch on within 2 seconds.
- If the light is powered off for more than 20 seconds, it will keep the latest program when it is turned on again.
- To achieve synchronization, confirm all lamps are installed correctly on the same switch. After they are powered off for more than 20 seconds, switch them on and off continuously three times, and then finally turn them on again. They will all go to program 5. Now you can select a program for them by switching off and on within 8 seconds.
- Alternatively, we recommend using our optional controller (with in-built safety transformer), which comes with (a) remote control for easy operation and (b) auxiliary connection of 24V for operation of any other electrical item.

## Safety Warnings

The people who are in charge of installation should have the required qualifications for this.

## Warranty & Exclusions

Should a defect become evident during the term of warranty, at its option, the manufacturer will repair or replace such item or part at its own cost and expense. Customers need to follow the warranty claim procedure to obtain the benefit of this warranty.

The guarantee will be void in cases of improper installation, improper operation, inappropriate use, tampering, or the use of non-original spare parts.

## Disposal



When disposing of the product, please sort the waste as electrical or electronic product waste and hand it over to your local waste collection system.

The separate collection and recycling of waste equipment at the time of disposal will help ensure that it is recycled in a manner that protects human health and the environment. Contact your local authority for information on where you can drop off your water pump for recycling.



VÁGNER POOL s.r.o.  
Nad Safinou II 348  
25242 Vestec  
Czech Republic  
[info@vagnerpool.com](mailto:info@vagnerpool.com)  
[www.vagnerpool.com](http://www.vagnerpool.com)